

## PILOT SOLENOID OPERATED

### General Description

A range of compact 3/2 and 5/2 pilot solenoid operated spool valves in Stainless Steel for use on gases and liquids.

- Hazardous area solenoids.
- Coil with 316 or aluminium housing
- Block before bleed.
- ATEX approved.
- UL Listed CSA approvals.

### Operating Medium

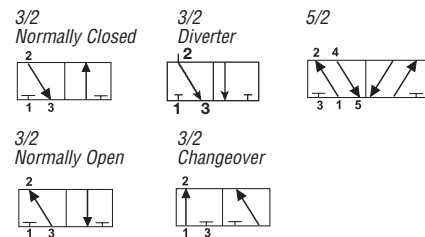
#### Gases

Filtered non-lubricated air, inert gas, sweet (natural) gases. Sour gas option available (details on application)

#### Liquids

Low pressure hydraulic, mineral oil or water.

### Functional Symbols



### Technical Data

#### Ports

- 1/2" NPT (BSP option available)
- 1/8" NPT pilot ports

#### Working Pressure (gases & liquids)

- Single Solenoid Valves  
3 to 12 bar (45 to 174 psi)
- Double Solenoid Valves  
2 to 12 bar (30 to 174 psi)

#### Cv (Kv)

- 3/2 valves - 3.5 (53)
- 5/2 valves - 3.5 (53)

#### Working Temperature

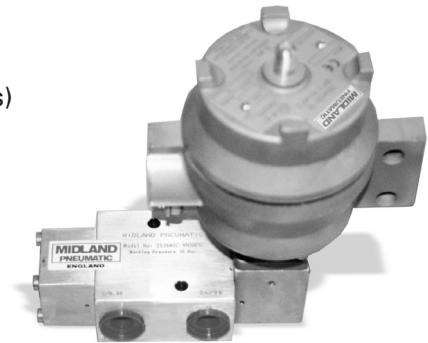
- Valve only  
-20°C to +180°C (-4°F to +356°F)
- Solenoid - Ambient temperature  
-20°C to +180°C (-4°F to +149°F)

#### Minimum Pilot Pressure

- At 6.3 bar (90 psi) body pressure  
Pilot Return - 2.0 bar (30.0 psi)

#### Maximum Flow

- 6 bar (87 psi), 1 bar (14.5 psi) differential
- 3/2 valves - 3500 L/min (123 SCFM)
- 5/2 valves - 3500 L/min (123 SCFM)



### Construction Materials

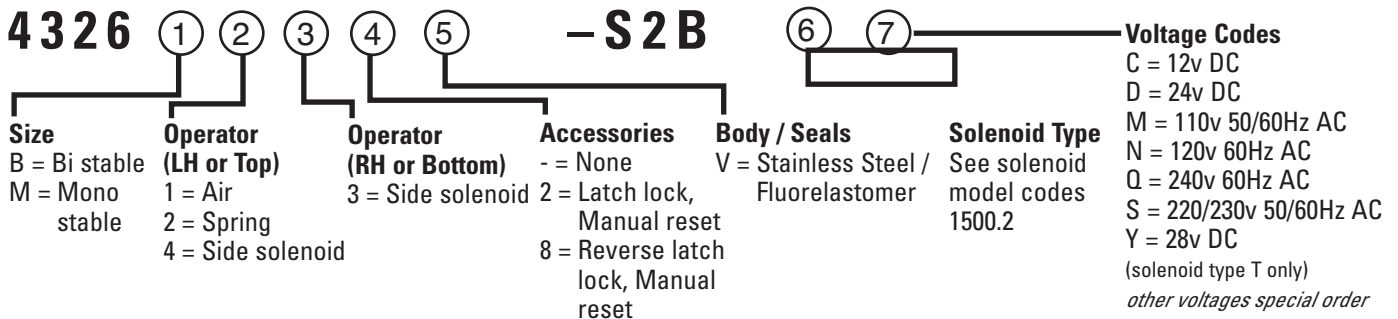
- Stainless Steel AISI 316L to NACE MR-01-75 Body
- Stainless Steel AISI 316L to NACE MR-01-75 Spool
- 316 Stainless Steel Spring
- Fluoroelastomer Seals
- Refer to solenoid specification

### Instrument Signals

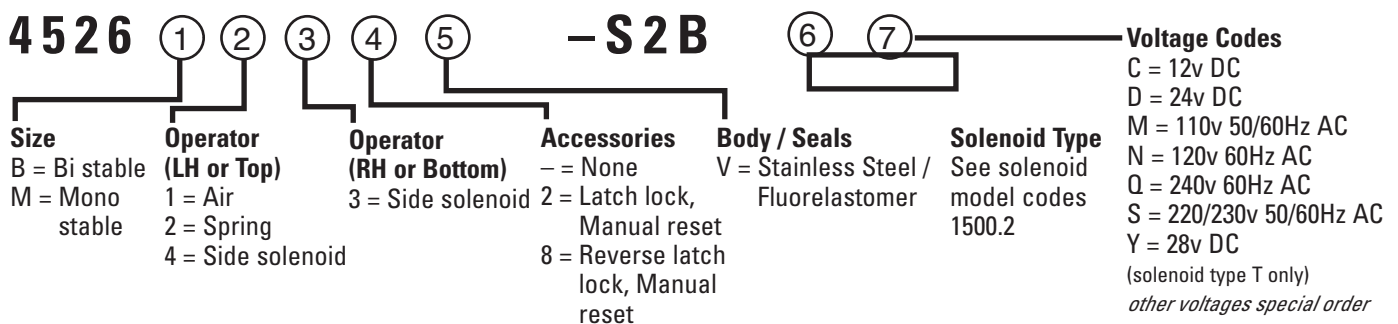
Valves with side mounted solenoids can be supplied to operate on instrument signals, typically 0 to 1.5 bar (0 to 21 psi). A separate supply to the pilot solenoid is necessary. This supply is 2 bar (30 psi) minimum for the double pilot and 3 bar (45 psi) minimum for the single pilot.

## MODEL CODES

### 3/2 Valves



### 5/2 Valves



# 1600 Spool Valves

SPPOOL VALVES • 1/2", 3/2, 5/2, NPT (BSP)

1600 SERIES

1600 SPOOL VALVES

## PILOT SOLENOID OPERATED

### SOLENOID MODEL CODES



Model Code	Safety Rating	Protection and Housing Material	Approved Area	Ingress Protection	Weight kg (lbs)
D	EExd II T5	Flameproof Cast Iron	Zones 1 & 2	IP65	1.30 (2.86)
CL	NEMA 7 & 9	Flameproof, 316 Stainless Steel	Class I, Groups C & D Class III Groups E, F & G	NEMA 4	0.29 (0.65)
K	EExdIIC T6	Flameproof, 316 Stainless Steel	Zones 1 and 2	IP67	1.62 (3.57)
P	EEme II T4/T5	Increased Encapsulation, Glass Reinforced Polyamid.	Zones 1 and 2	IP66	0.63 (1.39)
T	EExia IIC T6	Intrinsically Safe. Glass Reinforced Polyamid.	Zones 0	IP66	0.53 (1.17)
4	IP65	Solenoid	Not Approved	IP65	0.085 (0.19)

The model code shown appears in the 13th position of the model number.

#### Preferred models

Model Number	Description	Weight kg (lbs)	Symbol
4326M23-VS2B * +	1/2" NPT 3/2 Pilot solenoid operated, spring return	1.50 (3.31) + Sol	
4326M232VS2B * +	1/2" NPT 3/2 Pilot solenoid operated, spring return with latch lock, manual reset	2.10 (4.63) + Sol	
4326M238VS2B * +	1/2" NPT 3/2 Pilot solenoid operated, spring return with reverse latch lock, manual reset	2.10 (4.63) + Sol	
4326B13-VS2B * +	1/2" NPT 3/2 Pilot solenoid operated, pilot air return	1.60 (3.53) + Sol	
4326B33-VS2B * +	1/2" NPT 3/2 Double pilot solenoid operated	1.70 (3.75) + Sol	

#### Preferred models

Model Number	Description	Weight kg (lbs)	Symbol
4526M23-VS2B * +	1/2" NPT 5/2 Pilot solenoid operated, spring return	2.10 (4.63) + Sol	
4526M232VS2B * +	1/2" NPT 5/2 Pilot solenoid operated, spring return with latch lock, manual reset	2.70 (5.95) + Sol	
4526M238VS2B * +	1/2" NPT 5/2 Pilot solenoid operated, spring return with reverse latch lock, manual reset	2.70 (5.95) + Sol	
4526B13-VS2B * +	1/2" NPT 5/2 Pilot solenoid operated, pilot air return	2.20 (4.85) + Sol	
4526B33-VS2B * +	1/2" NPT 5/2 Double pilot solenoid operated	2.30 (5.07) + Sol	

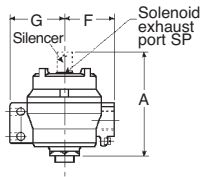
\* Specify solenoid type, + Specify solenoid voltage, Without solenoid fitted specify "Z" in position "13" (for Zones 0, 1 & 2)  
Without solenoid fitted specify "A" in position "13" (for NEMA 7 & 9)

### PILOT SOLENOID OPERATED

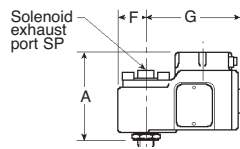


### 3/2 and 5/2 Spool Valves

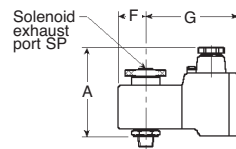
**Solenoid code K**  
(EExd IIC T6)



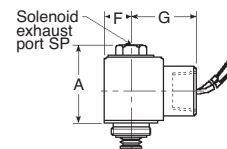
**Solenoid code D**  
(EExd IIc T5)



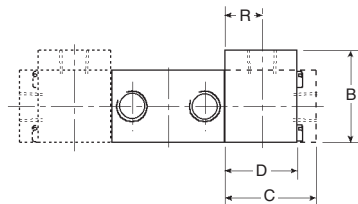
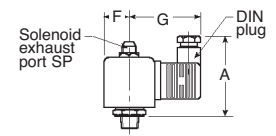
**Solenoid code P (EEx me II T4/T5) Solenoid code T**  
(EEx ai IIC T6)



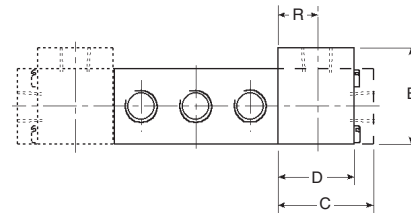
**CL (NEMA 7 & 9)**



**Solenoid code 4**  
(None hazardous)



3/2 valve base. For basic valve dimensions see page 1600.4



5/2 valve base. For basic valve dimensions see page 1600.4

### INSTALLATION DIMENSIONS mm (inches)

Model Code	A	B	C	D	F	G	R	SP
CL	42 (1.65)	41 (1.61)	32 (1.26)	32 (1.26)	18 (0.71)	40 (1.57)	16 (0.63)	1/8" NPT
D	76 (2.99)	41 (1.61)	32 (1.26)	32 (1.26)	25 (0.98)	84 (3.31)	16 (0.63)	1/8" NPT
K	110 (4.33)	41 (1.61)	32 (1.26)	32 (1.26)	52 (2.05)	58 (2.28)	16 (0.63)	M8
P & T	71.5 (2.81)	41 (1.61)	32 (1.26)	32 (1.26)	25 (0.98)	81 (3.19)	16 (0.63)	1/8" NPT
4	57 (2.24)	39 (1.54)	26 (1.02)	21 (0.83)	19.5 (0.77)	50 (1.97)	11 (0.43)	1/8" NPT

### SOLENOID SPECIFICATIONS

Model Code	K	D	P	T	CL	4
Type of Protection	EExd IIC T6	EExd IIc T5	EEx me II T4/T5	EEx ia IIc T6	NEMA 7 & 9	None
Approved Area	Zones 1 and 2	Zones 1 and 2	Zones 1 and 2	Zone 0	Class I, Groups C & D, Class II Groups E, F & G	None
Degree of Protection	IP67	IP67	IP66	IP66	NEMA 4 (IP55)	IP65
Housing	316 Stainless Steel alt Aluminium Epoxy coated	Ferritic, Cast Iron Epoxy painted	Glass reinforced Polyamid (St St conduit hub)	Glass reinforced Polyamid Polyamid	Stainless Steel Coil potted	Molded Plastic
Cable entry (Alt cable entry available)	M20 x 1.5	M20 x 1.5	M20 x 1.5	M20 x 1.5	1/2" NPT 24" leads	DIN plug
Power Consumption	DC 5W AC 5W	8W	6W	0.3W	1.8W 1.8W	9W 9W(holding)
Maximum Admissable Surface Temp	85°C (185°F)	100°C (212°F)	T4 135°C (275°F) T5 100°C (212°F)	85°C (185°F)	160°C (320°F)	N/A
Maximum Ambient Temperature	40°C (104°F)	40°C (104°F)	T4 75°C (167°F) T5 40°C (104°F)	65°C (149°F)	40°C (104°F)	55°C (131°F)
Maximum Fluid Temp	80°C (176°F)	75°C (167°F)	75°C (167°F)	75°C (167°F)	105°C (221°F)	75°C (167°F)
Approved Standard	ATEX	ATEX	ATEX	ATEX	UL Listed CSA Certified	N/A N/A
Certificate Number	SIRA03ATEX1319	02ATEX6008X	02ATEX6023X	02ATEX6066X	026894X0000	N/A

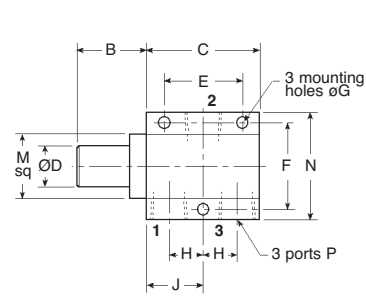
### PILOT SOLENOID OPERATED

### INSTALLATION DIMENSIONS mm (inches)



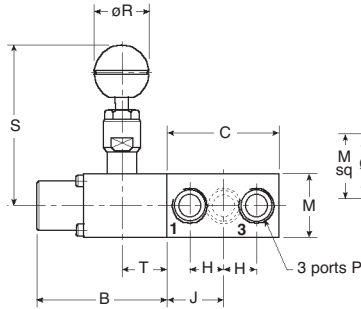
#### 3/2 Pilot Solenoid Operated - Valve Bases

**Spring Return**  
4326M23-VS2B\*\*



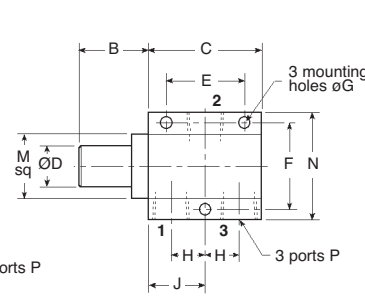
Body Thickness = 'M'

**Spring Return with Latch Lock**  
4326M232VS2B\*\* 4326M238VS2B\*\*



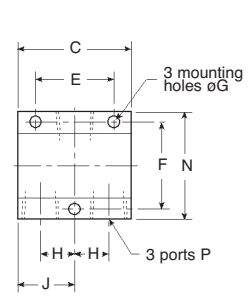
Dimensions 'E', 'F', and 'G' and 'N' as for spring return base

**Pilot Air Return**  
4326B13-VS2B\*\*



Body Thickness = 'M'

**Pilot Solenoid Return**  
4326B33-VS2B\*\*

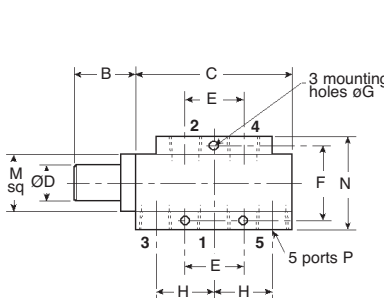


Body Thickness = 'M'

Model Number	B	C	D	E	F	G	H	J	M	N	P	PP	R	S	T
4326M23-VS2B**	40 (1.57)	65 (2.56)	24 (0.94)	45 (1.77)	50 (1.97)	6.5 (0.26)	19.5 (0.77)	32.5 (1.28)	38 (1.50)	62 (2.44)	1/2" NPT 1/2" NPT	- -	- -	- -	- -
4326M232VS2B**	75 (2.95)	65 (2.56)	-	45 (1.77)	50 (1.97)	6.5 (0.26)	19.5 (0.77)	32.5 (1.28)	38 (1.50)	62 (2.44)	1/2" NPT 1/2" NPT	- -	32 (1.26)	93 (3.66)	26 (1.02)
4326M238VS2B**	75 (2.95)	65 (2.56)	-	45 (1.77)	50 (1.97)	6.5 (0.26)	19.5 (0.77)	32.5 (1.28)	38 (1.50)	62 (2.44)	1/2" NPT 1/2" NPT	- -	32 (1.26)	93 (3.66)	26 (1.02)
4326B13-VS2B**	32 (1.26)	65 (2.56)	-	45 (1.77)	50 (1.97)	6.5 (0.26)	19.5 (0.77)	32.5 (1.28)	38 (1.50)	62 (2.44)	1/2" NPT 1/8" NPT	1/8" NPT	- -	- -	- -
4326B33-VS2B**	-	65 (2.56)	-	45 (1.77)	50 (1.97)	6.5 (0.26)	19.5 (0.77)	32.5 (1.28)	38 (1.50)	62 (2.44)	1/2" NPT 1/2" NPT	- -	- -	- -	- -

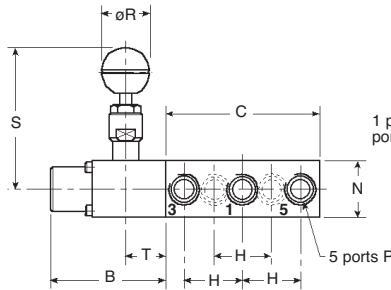
#### 5/2 Pilot Solenoid Operated - Valve Bases

**Spring Return**  
4526M23-VS2B\*\*



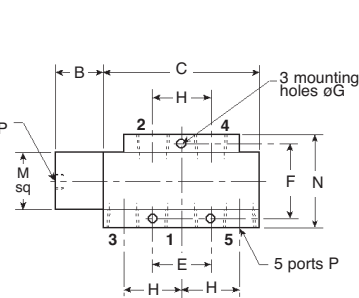
Body Thickness = 'M'

**Spring Return with Latch Lock**  
4526M232VS2B\*\* 4526M238VS2B\*\*



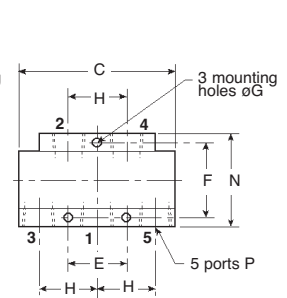
Dimensions 'E', 'F', and 'G' and 'N' as for spring return base

**Pilot Air Return**  
4526B13-VS2B\*\*



Body Thickness = 'M'

**Pilot Solenoid Return**  
4526B33-VS2B\*\*



Body Thickness = 'M'

Model Number	B	C	D	E	F	G	H	M	N	P	PP	R	S	T
4526M23-VS2B**	40 (1.57)	103 (4.06)	24 (0.94)	38 (1.50)	50 (1.97)	6.5 (0.26)	38.5 (1.52)	38 (1.50)	62 (2.44)	1/2" NPT 1/2" NPT	- -	- -	- -	- -
4526M232VS2B**	75 (2.95)	103 (4.06)	-	38 (1.50)	50 (1.97)	6.5 (0.26)	38.5 (1.52)	38 (1.50)	62 (2.44)	1/2" NPT 1/2" NPT	- -	32 (1.26)	93 (3.66)	26 (1.02)
4526M238VS2B**	75 (2.95)	103 (4.06)	-	38 (1.50)	50 (1.97)	6.5 (0.26)	38.5 (1.52)	38 (1.50)	62 (2.44)	1/2" NPT 1/2" NPT	- -	32 (1.26)	93 (3.66)	26 (1.02)
4526B13-VS2B**	32 (1.26)	103 (4.06)	-	38 (1.50)	50 (1.97)	6.5 (0.26)	38.5 (1.52)	38 (1.50)	62 (2.44)	1/2" NPT 1/2" NPT	1/8" NPT 1/8" NPT	- -	- -	- -
4526B33-VS2B**	-	103 (4.06)	-	38 (1.50)	50 (1.97)	6.5 (0.26)	38.5 (1.52)	38 (1.50)	62 (2.44)	1/2" NPT 1/2" NPT	- -	- -	- -	- -

## PILOT OPERATED

### General Description

A range of compact 3/2 and 5/2 pilot operated spool valves in stainless steel for use on gases and liquids.

- Compact.
- 3/2 and 5/2 versions.
- Non lube.
- Meet NACE standard.
- Stainless steel internals.

### Operating Medium

#### Gases

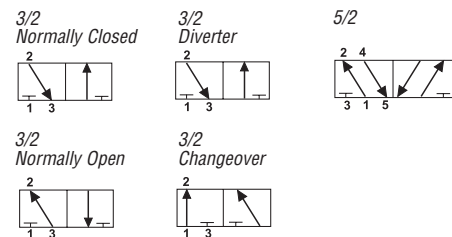
Filtered lubricated or non-lubricated air, inert gas, sweet (*natural*) gases.

Sour gas option available  
(*details on application*)

#### Liquids

Low pressure hydraulic, mineral oil or water.

### Functional Symbols



### Technical Data

#### Ports

- 1/2" NPT (*BSP option available*)
- 1/8" NPT pilot ports

#### Working Pressure (gases & liquids)

- 12 bar (174 psi)

#### Cv (Kv)

- 3/2 valves 3.5 (53)
- 5/2 valves 3.5 (53)

#### Working Temperature

- -20°C to +180°C (-4°F to +356°F)

#### Minimum Pilot Pressure

- At 6.3 bar (90psi) body pressure  
3/2 and 5/2
- Spring return 3 bar (45psi)
- Pilot return 2 bar (30psi)

#### Maximum Flow

- 6 bar (87 psi), 1 bar (14.5 psi) differential
- 3/2 - 3500 L/min (123 SCFM)
- 5/2 - 3500 L/min (123 SCFM)



### Construction Materials

- Stainless Steel AISI 316L to NACE MR-01-75 Body
- Stainless Steel AISI 316L to NACE MR-01-75 Spool
- 316 Stainless Steel Spring
- Fluoroelastomer Seals

### Preferred Models

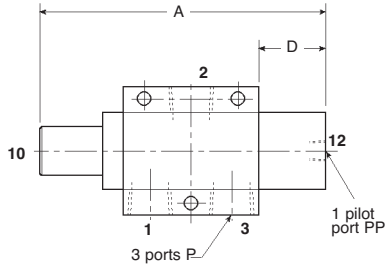
Model Number	Description	Weight kg (lbs)	Symbol
4326M21-VS2B	1/2" NPT 3/2 Pilot operated, spring return	1.40 (3.09)	
4326M212VS2B	1/2" NPT 3/2 Pilot operated, spring return with latch lock, manual reset	2.00 (4.41)	
4326M218VS2B	1/2" NPT 3/2 Pilot operated, spring return with reverse latch lock, manual reset	2.00 (4.41)	
4326B11-VS2B	1/2" NPT 3/2 Pilot operated, pilot return	1.50 (3.31)	
4526M21-VS2B	1/2" NPT 5/2 Pilot operated, spring return	2.00 (4.41)	
4526M212VS2B	1/2" NPT 5/2 Pilot operated, spring return with latch lock, manual reset	2.60 (5.73)	
4526M218VS2B	1/2" NPT 5/2 Pilot operated, spring return with reverse latch lock, manual reset	2.60 (5.73)	
4526B11-VS2B	1/2" NPT 5/2 Pilot operated, pilot return	2.10 (4.63)	

### PILOT OPERATED

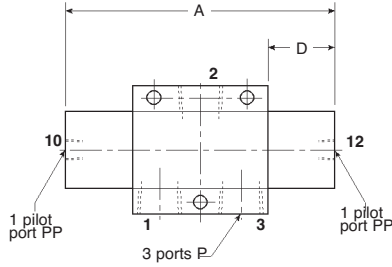
### INSTALLATION DIMENSIONS mm (inches)

#### 3/2 Pilot Solenoid Operated - Spring or Pilot Return

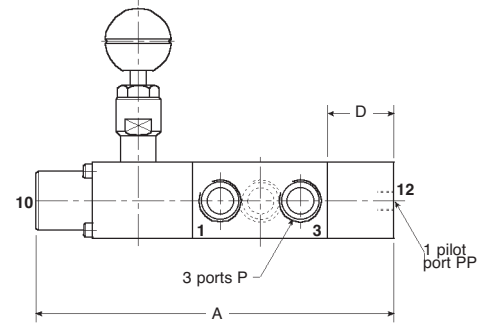
*Pilot Operated, Spring Return*  
4326M21-VS2B



*Pilot Operated, Pilot Return*  
4326B11-VS2B



*Pilot Operated, Spring Return with Latch Lock*  
4326M212VS2B, 4326M218VS2B

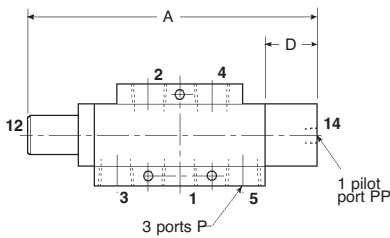


For basic valve dimensions, see 3/2 pilot return bases on page 1600.4

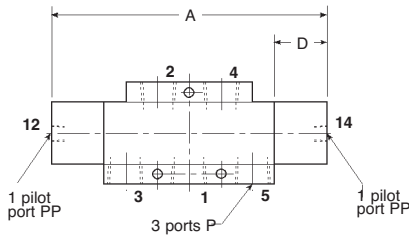
Model Number	A	D	P	PP
4326M21-VS2B	137 (5.39)	32 (1.26)	1/2" NPT 1/2" NPT	1/8" NPT 1/8" NPT
4326B11-VS2B	129 (5.08)	32 (1.26)	1/2" NPT 1/2" NPT	1/8" NPT 1/8" NPT
4326M212VS2B & 4326M218VS2B	172 (6.77)	32 (1.26)	1/2" NPT 1/2" NPT	1/8" NPT 1/8" NPT

#### 5/2 Pilot Solenoid Operated - Spring or Pilot Return

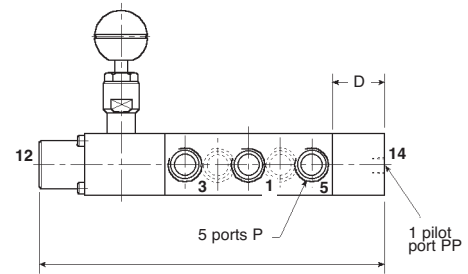
*Pilot Operated, Spring Return*  
4526M21-VS2B



*Pilot Operated, Pilot Return*  
4526B11-VS2B



*Pilot Operated, Spring Return with Latch Lock*  
4526M212VS2B, 4526M218VS2B



For basic valve dimensions, see 3/2 pilot return bases on page 1600.4

Model Number	A	D	P	PP
4526M21-VS2B	175 (6.89)	32 (1.26)	1/2" NPT 1/2" NPT	1/8" NPT 1/8" NPT
4526B11-VS2B	167 (6.57)	32 (1.26)	1/2" NPT 1/2" NPT	1/8" NPT 1/8" NPT
4526M212VS2B & 4526M218VS2B	210 (8.27)	32 (1.26)	1/2" NPT 1/2" NPT	1/8" NPT 1/8" NPT



## MANUALLY OPERATED (PAD)

### General Description

A range of compact 3/2 and 5/2 manually operated spool valves in stainless steel for use on gases and liquids.

- Closed Center
- Compact
- Meets NACE

### Operating Medium

#### Gases

Filtered lubricated or non-lubricated air, inert gas, sweet (*natural*) gases.

Sour gas option available. *(details on application)*

#### Liquids

Low pressure hydraulic, mineral oil or water.



### Technical Data

#### Ports

- 1/4" – 1-1/2" NPT (*BSP option available*)
- 1/4" NPT pilot ports

#### Working Pressure (gases & liquids)

- 12 bar (174 psi)

#### Cv (Kv)

- 3/2 valves 3.5 (53)
- 5/2 valves 3.5 (53)

#### Working Temperature

- -20°C to +160°C (-4°F to +356°F)

#### Operating Force

- 10 bar (145 psi), body pressure
- 3/2 112N (25 lbf)
- 5/2 112N (25 lbf)

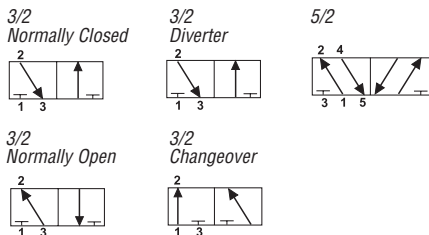
#### Maximum Flow

- 6 bar (87 psi), 1 bar (14.5 psi) differential
- 3/2 - 3500 L/min (94 SCFM)
- 5/2 - 3500 L/min (124 SCFM)

### Construction Materials

- Stainless Steel AISI 316L to NACE MR-01-75 Body
- Stainless Steel AISI 316L to NACE MR-01-75 Poppet
- 316 Stainless Steel Spring
- Fluoroelastomer Seals

### Functional Symbols



### Preferred Models

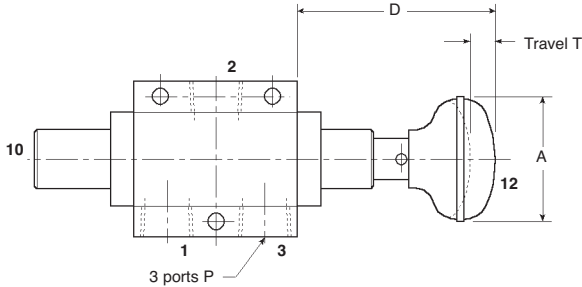
Model Number	Description	Weight kg (lbs)	Symbol
4326M27-VS2B	1/2" NPT 3/2 Pad operated, spring return	1.35 (2.98)	
4326B77-VS2B	1/2" NPT 3/2 Pad operated, push - pull	1.30 (2.87)	
4326B773VS2B	1/2" NPT 3/2 Pad operated, push-pull with detent	1.40 (3.09)	
4326B17-VS2B	1/2" NPT 3/2 Pad operated, pilot air return	1.50 (3.31)	
4526M27-VS2B	1/2" NPT 5/2 Pad operated, spring return	1.95 (4.30)	
4526B77-VS2B	1/2" NPT 5/2 Pad operated, push-pull	1.90 (4.19)	
4526B773VS2B	1/2" NPT 5/2 Pad operated, push-pull with detent	2.00 (4.41)	
4526B17-VS2B	1/2" NPT 5/2 Pad operated, pilot air return	2.10 (4.63)	

### PILOT SOLENOID OPERATED

#### INSTALLATION DIMENSIONS mm (inches)

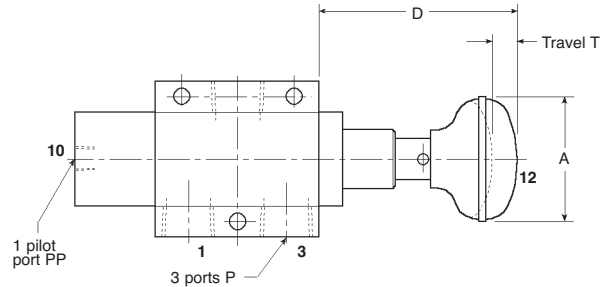
#### 3/2 Pad Operated - Spring Return, Pad Operated (Push-Pull), Pad Operated Pilot Air Return

*Pad Operated, Spring Return*  
4326M27-VS2B



For basic valve dimensions, see 3/2 spring return bases on page 1600.4

*Pad Operated (Push-Pull) 4326B77-VS2B*  
*Pad Operated (Push-Pull) with detent 4326B773VS2B*  
*Pad Operated, Pilot Air Return 4326B17-VS2B*

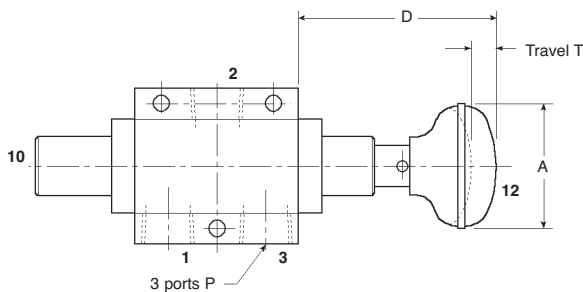


For basic valve dimensions, see 3/2 pilot air return bases on page 1600.4

Model Number	A	D	P	PP	T
4326M27-VS2B	51 (2.00)	78 (3.07)	1/2" NPT 1/2" NPT	- -	9.5 (0.37)
4326B77-VS2B	51 (2.00)	78 (3.07)	1/2" NPT 1/2" NPT	1/8" NPT 1/8" NPT	9.5 (0.37)
4326B773VS2B	51 (2.00)	78 (3.07)	1/2" NPT 1/2" NPT	1/8" NPT 1/8" NPT	9.5 (0.37)
4326B17-VS2B	51 (2.00)	78 (3.07)	1/2" NPT 1/2" NPT	1/8" NPT 1/8" NPT	9.5 (0.37)

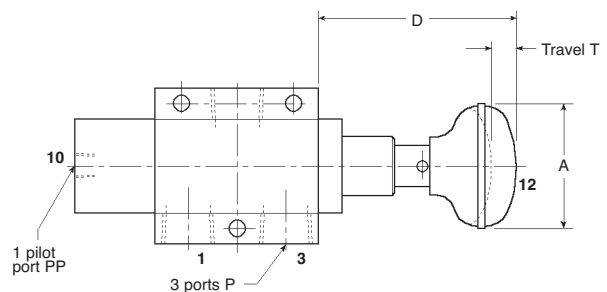
#### 5/2 Pad Operated - Spring Return, Pad Operated (Push-Pull), Pad Operated Pilot Air Return

*Pad Operated, Spring Return*  
4526M27-VS2B



For basic valve dimensions, see 5/2 spring return bases on page 1600.4

*Pad Operated (Push-Pull) 4526B77-VS2B*  
*Pad Operated (Push-Pull) with Detent 4526B773VS2B*  
*Pad Operated, Pilot Air Return 4526B17-VS2B*



For basic valve dimensions, see 5/2 pilot air return bases on page 1600.4

Model Number	A	D	P	PP	T
4526M27-VS2B	51 (2.00)	78 (3.07)	1/2" NPT 1/2" NPT	- -	9.5 (0.37)
4526B77-VS2B	51 (2.00)	78 (3.07)	1/2" NPT 1/2" NPT	1/8" NPT 1/8" NPT	9.5 (0.37)
4526B773VS2B	51 (2.00)	78 (3.07)	1/2" NPT 1/2" NPT	1/8" NPT 1/8" NPT	9.5 (0.37)
4526B17-VS2B	51 (2.00)	78 (3.07)	1/2" NPT 1/2" NPT	1/8" NPT 1/8" NPT	9.5 (0.37)



## MANUALLY OPERATED (LEVER)

### General Description

A range of compact 3/2 and 5/2 pilot operated spool valves in stainless steel for use on gases and liquids.

- Closed Center
- Compact
- Unique Key

### Operating Medium

#### Gases

Filtered lubricated or non-lubricated air, inert gas, sweet (*natural*) gases.

Sour gas option available

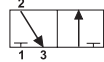
(*details on application*)

#### Liquids

Low pressure hydraulic, mineral oil or water.

### Functional Symbols

3/2  
Normally Closed



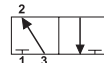
3/2  
Diverter



5/2



3/2  
Normally Open



3/2  
Changeover



### Technical Data

#### Ports

- 1/2" NPT (*BSP option available*)
- 1/8" NPT vent port

#### Working Pressure (*gases & liquids*)

- 12 bar (174 psi)

#### Cv (Kv)

- 3/2 valves 3.5 (53)
- 5/2 valves 3.5 (53)

#### Working Temperature

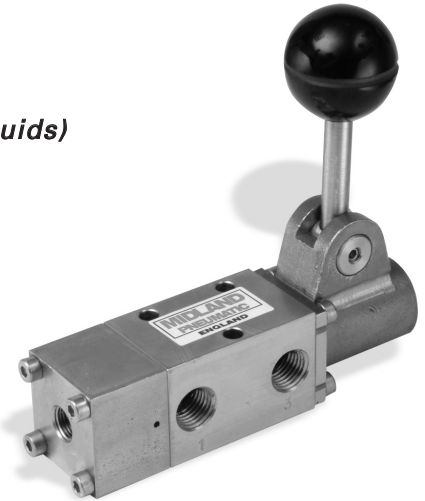
- -20°C to +180°C (-4°F to +356°F)

#### Operating Force

- 10 bar (145 psi), body pressure
- 3/2 61N (13.7 lbf)
- 5/2 61N (13.7 lbf)

#### Maximum Flow

- 6 bar (87 psi), 1 bar (14.5 psi) differential
- 3/2 - 3500 L/min (123 SCFM)
- 5/2 - 3500 L/min (123 SCFM)



### Construction Materials

- Stainless Steel AISI 316L to NACE MR-01-75 Body
- Stainless Steel AISI 316L to NACE MR-01-75 Spool
- 316 Stainless Steel Spring
- Fluoroelastomer Seals

### Preferred Models

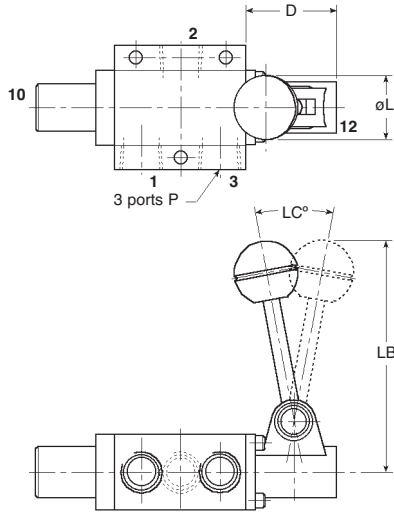
Model Number	Description	Weight kg (lbs)	Symbol
4326M25-VS2B	1/2" NPT 3/2 Lever operated, spring return	1.40 (3.09)	
4326B553VS2B	1/2" NPT 3/2 Lever operated with detent	1.50 (3.31)	
4526M25-VS2B	1/2" NPT 5/2 Lever operated, spring return	2.00 (4.41)	
4526B553VS2B	1/2" NPT 5/2 Lever operated with detent	2.10 (4.63)	

### MANUALLY OPERATED LEVER

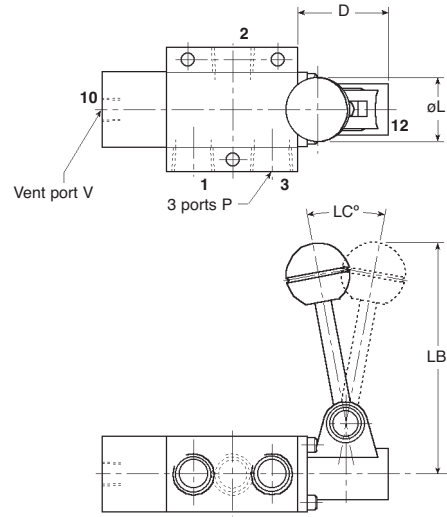
#### INSTALLATION DIMENSIONS mm (inches)

#### 3/2 Lever Operated - Spring Return, Lever Operated with Detent

Lever Operated, Spring Return  
4326M25-VS2B



Lever Operated with Detent  
4326B553VS2B



For basic valve dimensions, see 3/2 spring return bases on page 1600.4

Model Number	D	L	LB	LC	P	V
4326M25-VS2B	46	32	117	210	1/2" NPT	-
	(1.81)	(1.26)	(4.61)	210	1/2" NPT	-
4326B553VS2B	46	32	117	210	1/2" NPT	1/8" NPT
	(1.81)	(1.26)	(4.61)	210	1/2" NPT	1/8" NPT